



# GUANGZHOU ZHIGUANG ELECTRIC TECHNOLOG

广州智光电气股份有限公司



# CONTENTS

01

02

03

Integrated Energy Services Industrial Internet Platform

01





“

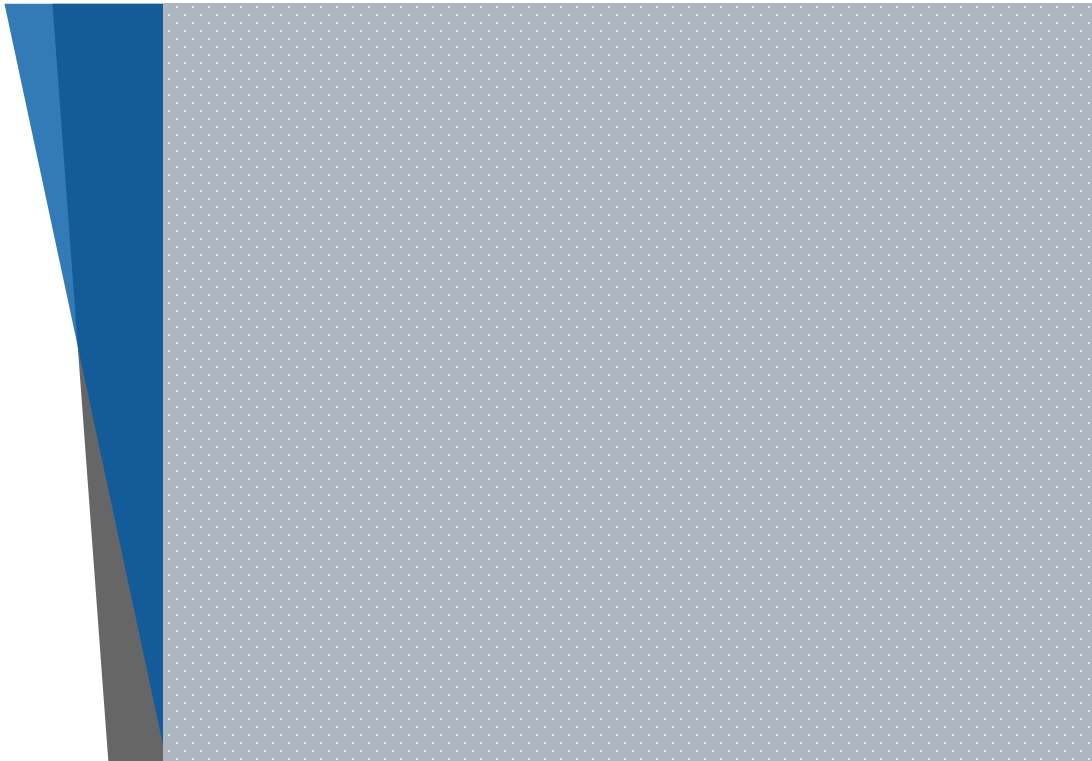
”

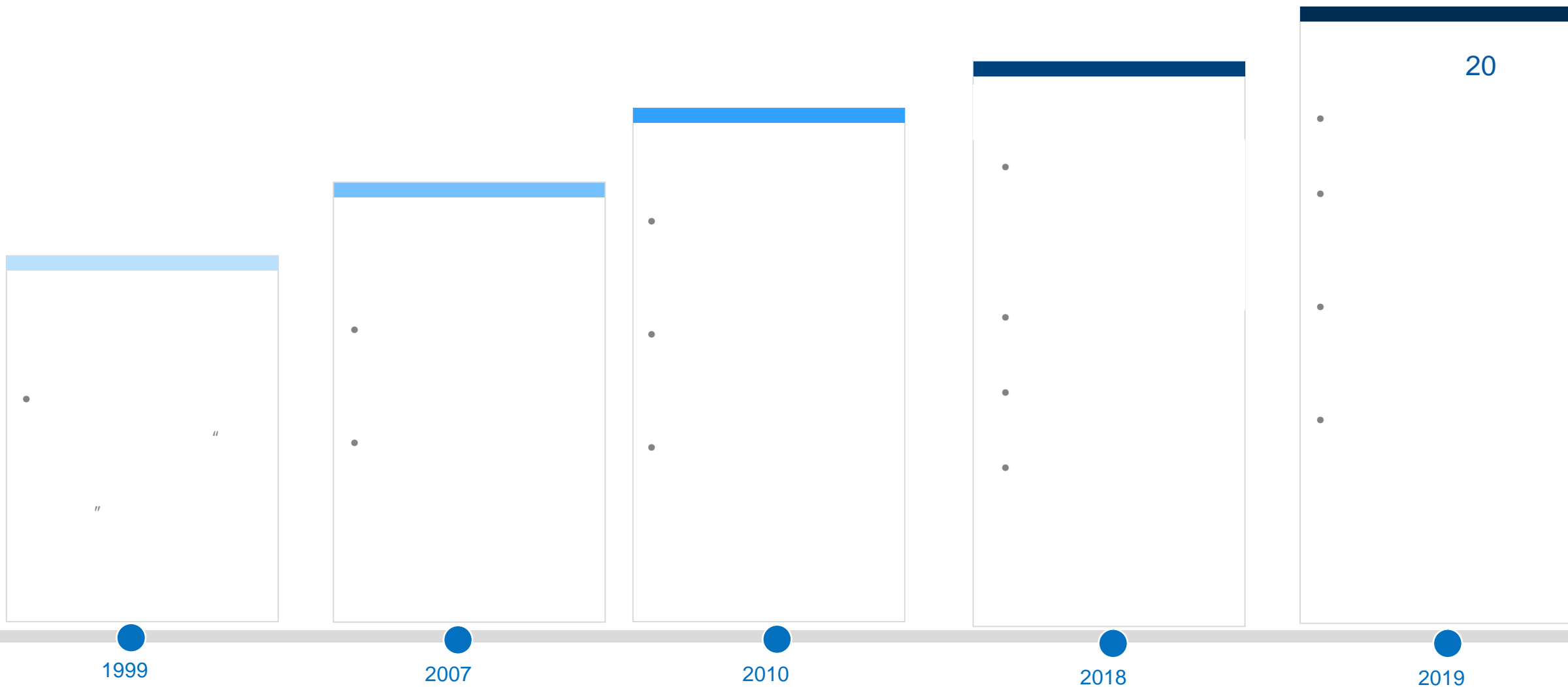
“

”



“ ”  
+ ”

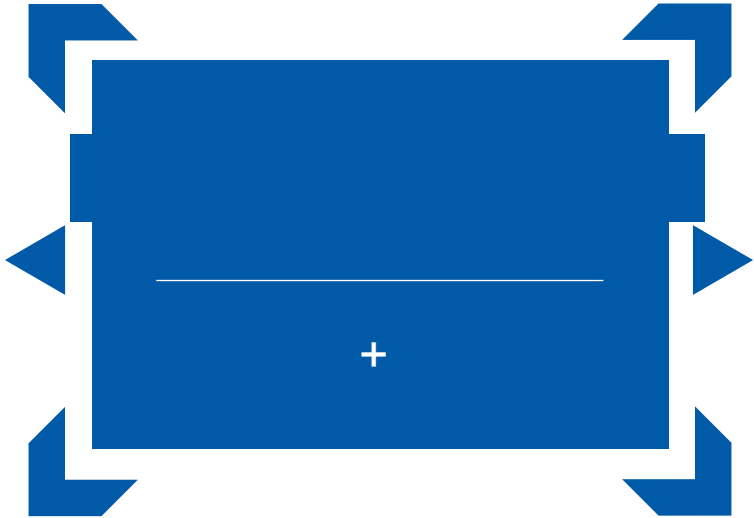




- 
- 

- 
- 

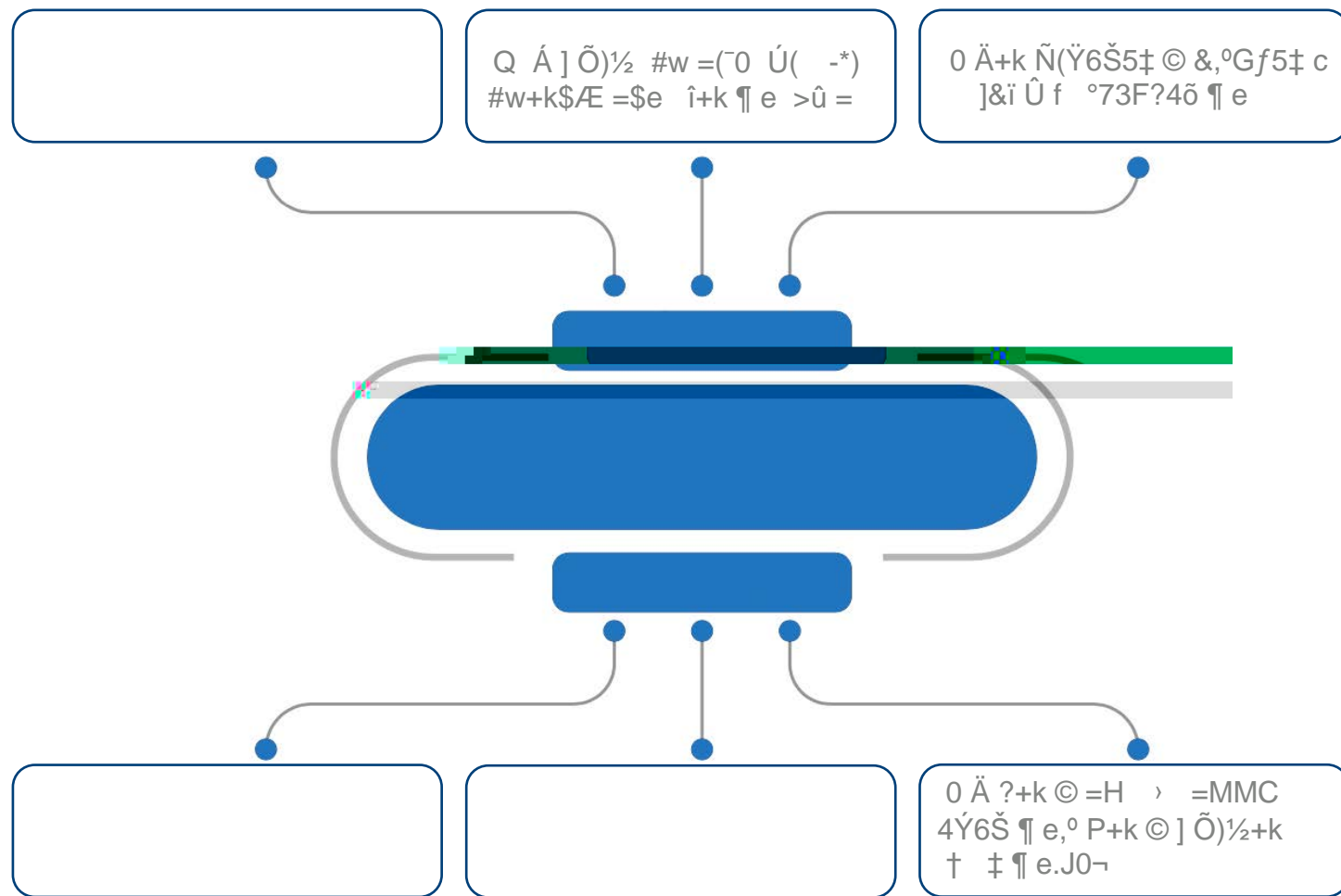
- 
- 
- 

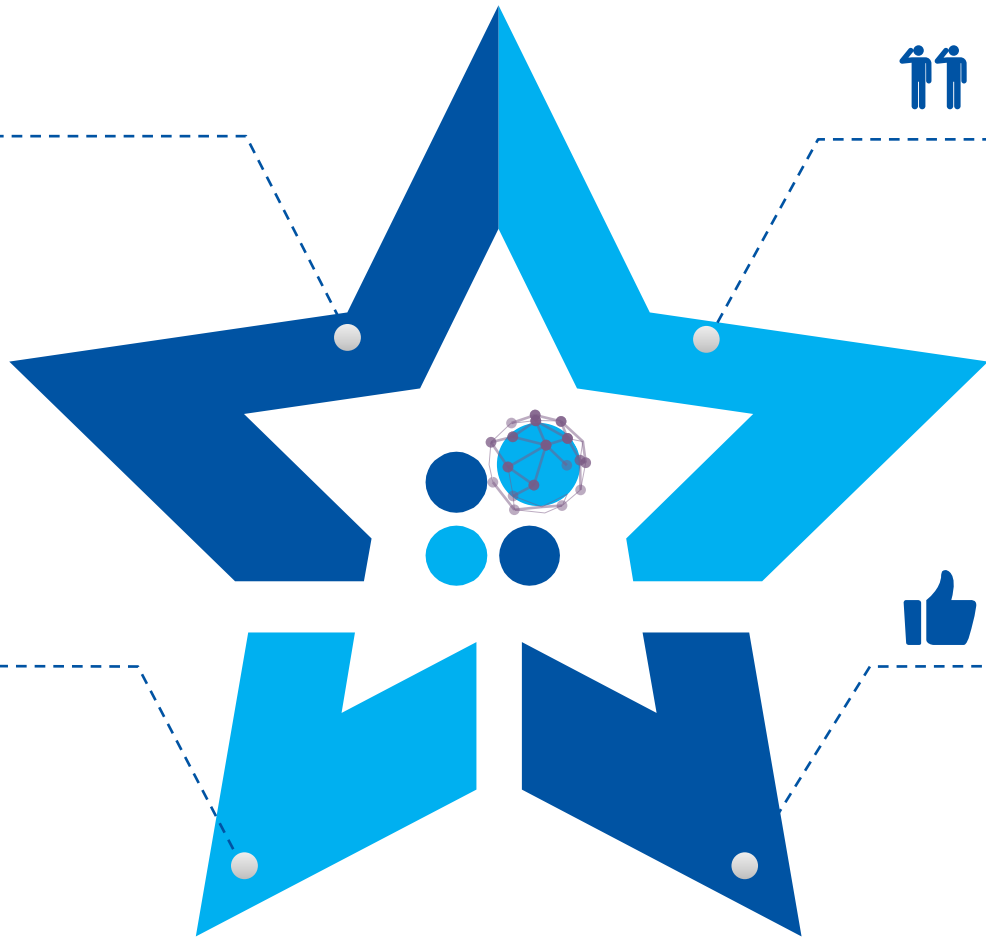


- 
- 
- 

- 
- 
- 

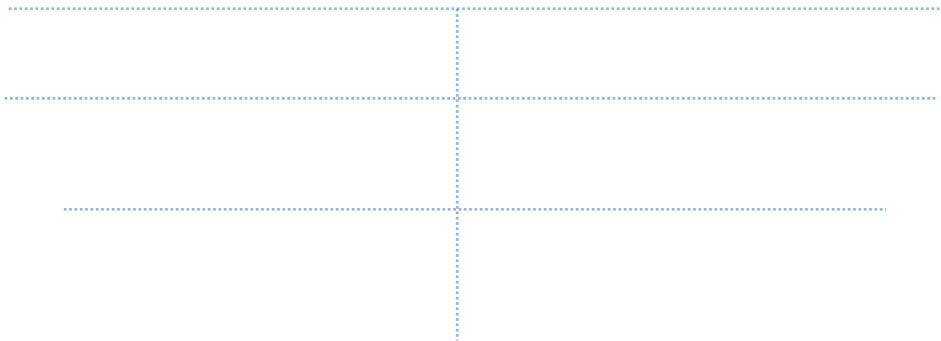
- 
- 
-



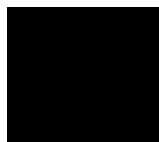












电网场景  
Power grid scenario

新能源  
场景  
New energy scene

工业场景  
Industrial scene

储能场景  
Energy storage  
scenario

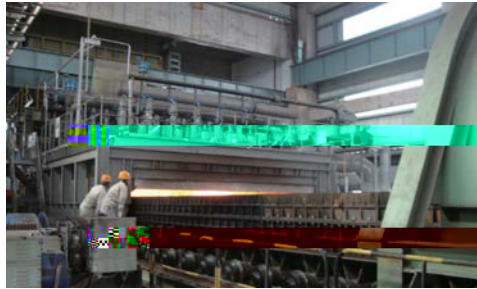
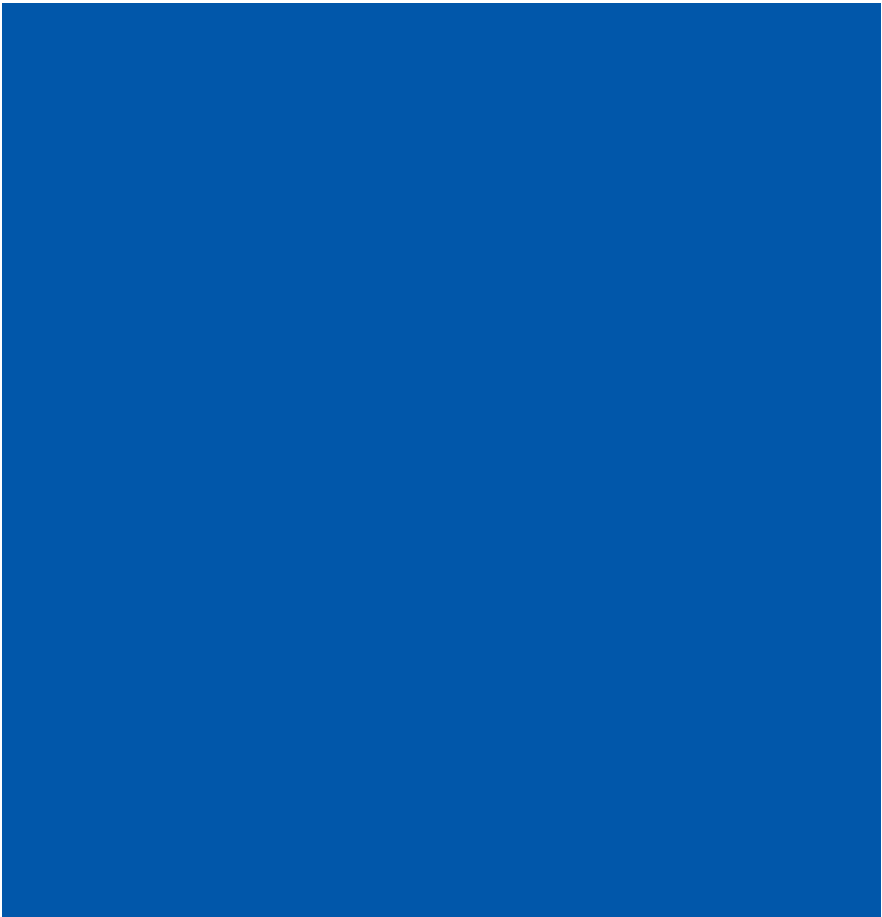
交通场景  
Traffic scene

典型应用场景

TYPICAL APPLICATION SCENARIOS

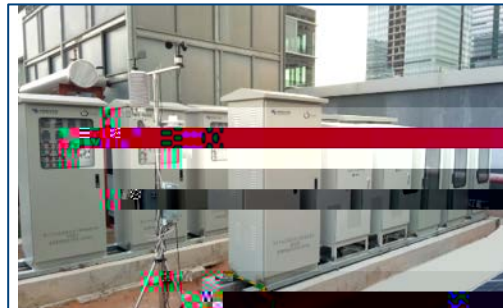






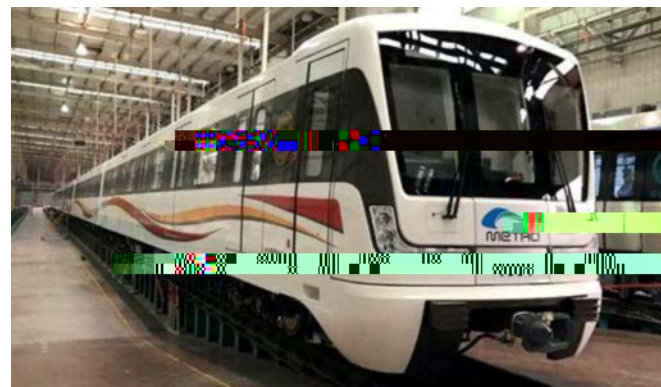
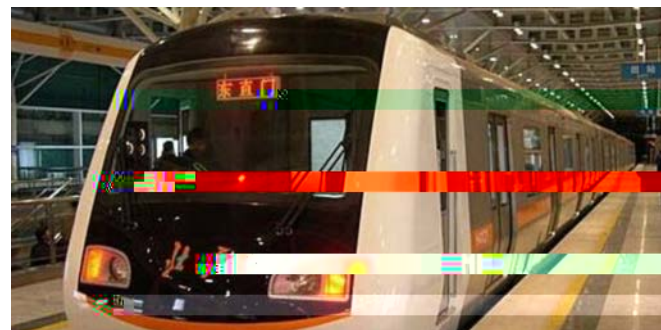
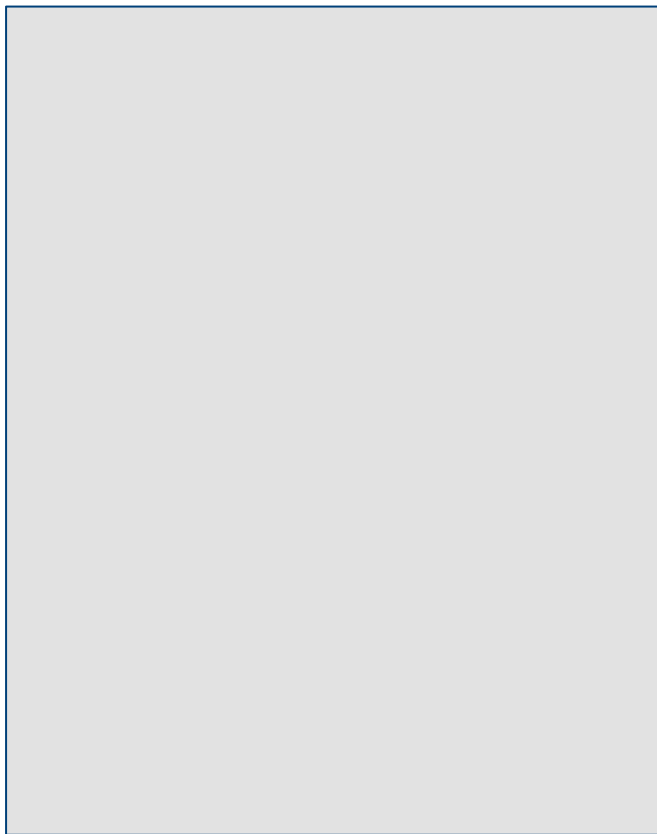




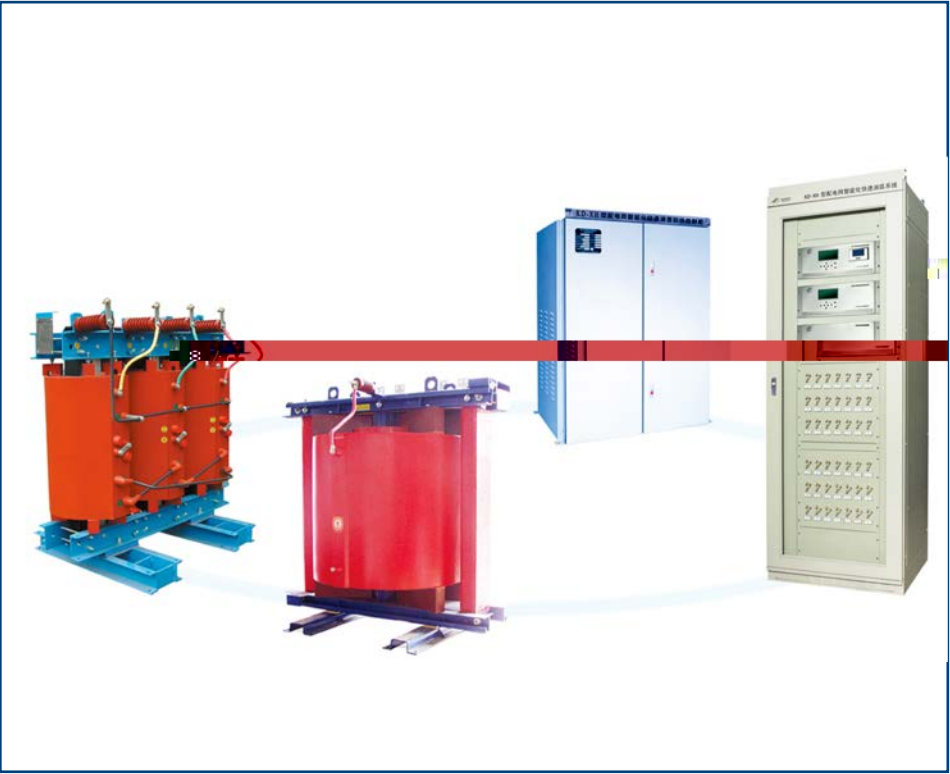




# UPS





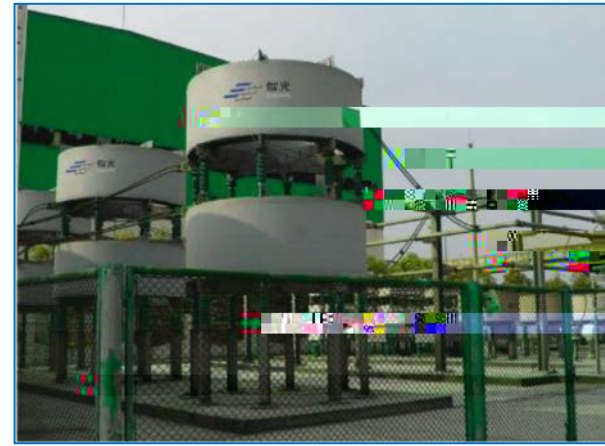
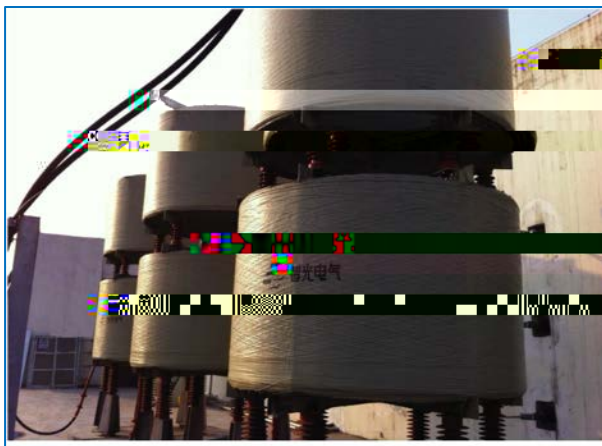




# ZG-dSVG



## ZG-dSVC



# ZG-PSVG ZG-SVG



## ZG-dPQC



03



“

”

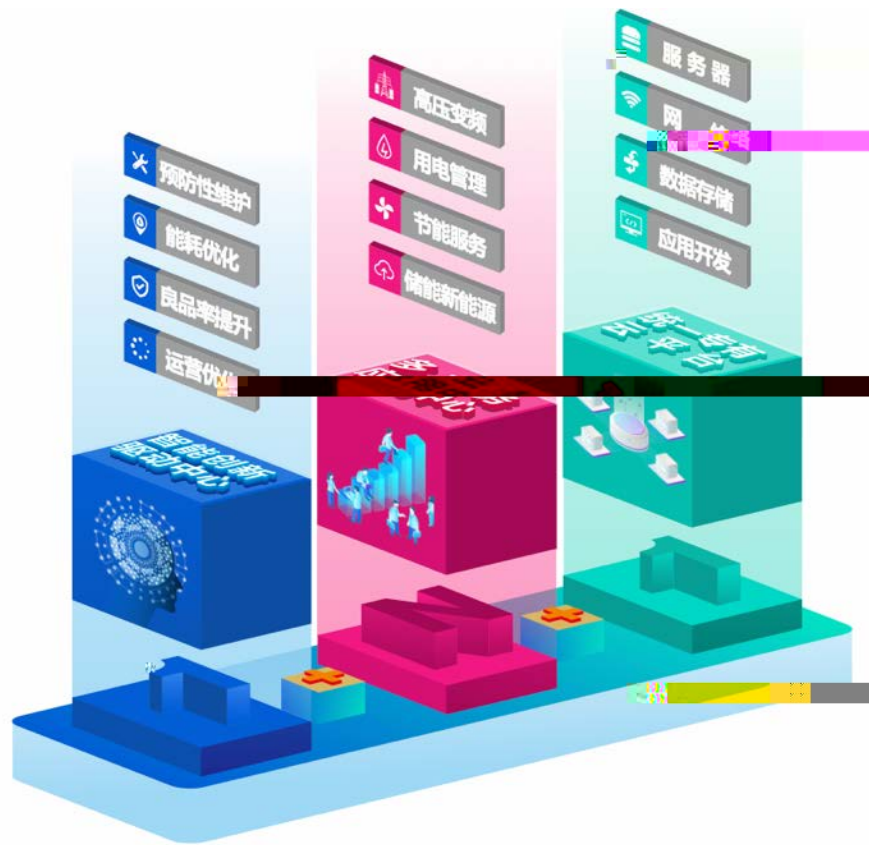
“

”

”

”

1+ N+1”



1

N

1

